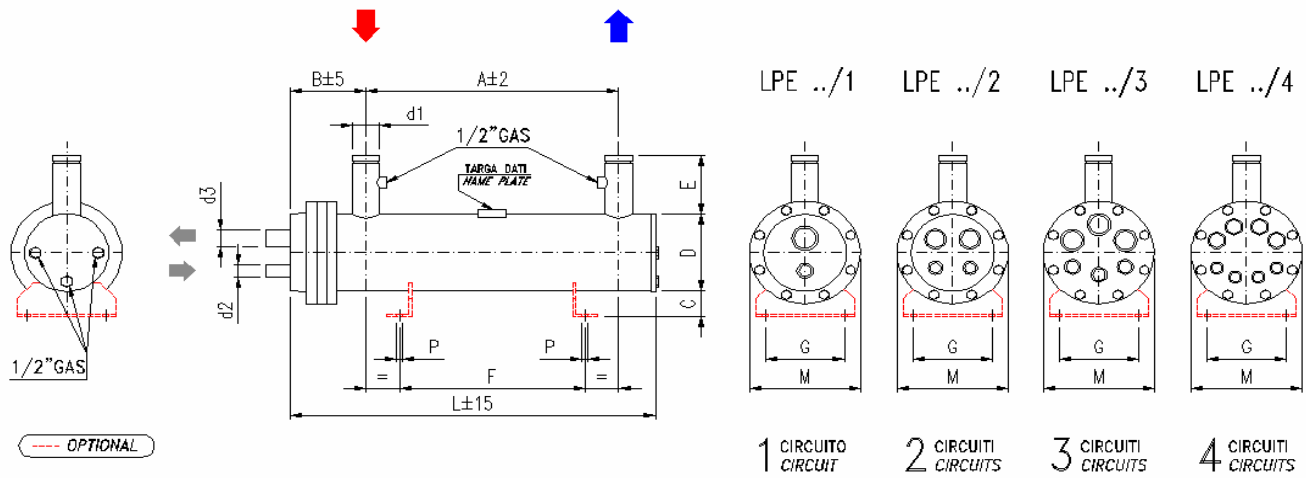


LPE



MODELLO / MODEL	LPE	85	120	170	205	230	280	320	360
Potenza totale	kW	85	118	170	205	230	277	319	359
Total capacity	Tons (RT)	24,2	33,6	48,3	58,3	65,4	78,8	90,7	102,1
Portata / Flow rate	m ³ /h	14,6	20,3	29,2	35,2	39,5	47,6	54,8	61,6
Perdite di carico / Pressure drop	kPa	25	28	39	53	33	41	47	35
Volume gas	L	17	21	30	37	46	45	62	72
Volume H ₂ O		37	51	105	82	71	143	111	113

Potenza totale = somma di tutti i circuiti / Total capacity = sum total of all circuits

DIMENSIONI DIMENSIONS (mm)	A	2010	2010		2230		2150	2150	2400
	B	178	178		208			246	
	C	66	68		88			95	
	D	194	219		273			324	
	E	130	130		150			150	
	F	1600	1600		1750		1750	1750	2000
	G	220	220		280			300	
	L	2278	2297		2550		2579	2579	2795
	M	270	270		340			420	
	P	12	12		14			16	

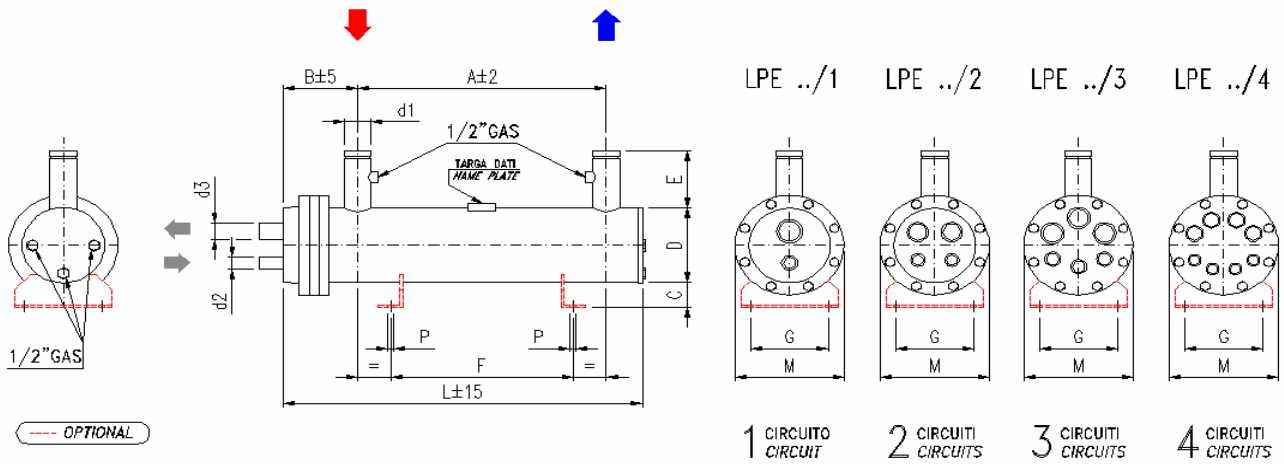
ATTACCHI / CONNECTIONS	ACQUA / WATER		d1 - PN 10	DN 80	DN 80	DN 100	DN 125
	1 Circuito 1 Circuit	LPE../1	d2	ODS (FL) 35	ODS (FL) 35	ODS (FL) 35	ODS (FL) 42
			d3	ODS (FL) 54	ODS (FL) 64	OD (FL) 89	OD (FL) 114
	2 Circuiti 2 Circuits	LPE../2	d2	ODS (FL) 28	ODS (FL) 28	ODS (FL) 35	ODS (FL) 28
			d3	ODS (FL) 42	ODS (FL) 54	ODS (FL) 64	OD (FL) 89
	3 Circuiti 3 Circuits	LPE../3	d2	ODS 28	ODS 28	ODS (RTLK) 35	ODS (RTLK) 35
			d3	ODS 42	ODS 42	ODS (FL) 54	ODS (FL) 64
	4 Circuiti 4 Circuits	LPE../4	d2	-	-	ODS 28	ODS 28
d3			-	-	ODS 54	ODS 54	

PESO / WEIGHT	kg	112	134	210	213	290	340	334	450
---------------	----	-----	-----	-----	-----	-----	-----	-----	-----

DATI NOMINALI NOMINAL DATA	R 134a	Temperatura entrata acqua / Inlet water temperature	+12°C	Temperatura di evaporazione / Evaporation temperature	+3°C
		Temperatura uscita acqua / Outlet water temperature	+7°C	Temperatura di condensazione / Condensation temperature	+40°C
		Fattore di sporamento / Fouling factor	m ² /kW	0,00043	Surriscaldamento / Superheating

Shell and tube evaporators

LPE



MODELLO / MODEL	LPE	460	490	540	580	680	730	860
Potenza totale	kW	452	488	537	580	678	731	856
Total capacity	Tons (RT)	128,5	138,8	152,7	164,9	192,8	207,8	243,4
Portata / Flow rate	m ³ /h	77,6	83,8	92,2	99,6	116,4	125,5	146,9
Perdite di carico / Pressure drop	kPa	48	48	46	43	54	41	55
Volume gas	L	87	102	127	154	177	195	222
Volume H ₂ O		236	240	195	268	300	330	370

Potenza totale = somma di tutti i circuiti / Total capacity = sum total of all circuits

DIMENSIONI DIMENSIONS (mm)	A	2600		2400	2800	2400	2800
	B	271		316		335	
	C	94		94		94	
	D	406		457		508	
	E	200		200		200	
	F	2000		1900	2300	1900	2300
	G	400		400		400	
	L	3057		2899	3299	2950	3350
	M	520		570		620	
P	16		16		18		

ATTACCHI / CONNECTIONS	ACQUA / WATER		d1 - PN 10	DN 150	DN 200	DN 200
	1 Circuito 1 Circuit	LPE../1	d2	ODS (FL) 42	-	-
			d3	OD (FL) 141	-	-
	2 Circuiti 2 Circuits	LPE../2	d2	ODS (FL) 35	ODS (FL) 42	ODS (FL) 54
			d3	OD (FL) 114	OD (FL) 114	OD (FL) 141
	3 Circuiti 3 Circuits	LPE../3	d2	ODS (FL) 35	ODS (FL) 35	ODS (FL) 42
			d3	OD (FL) 89	OD (FL) 89	OD (FL) 114
	4 Circuiti 4 Circuits	LPE../4	d2	ODS (RTLK) 35	ODS (RTLK) 28	ODS (FL) 35
d3			ODS (FL) 64	OD 76	OD (FL) 89	

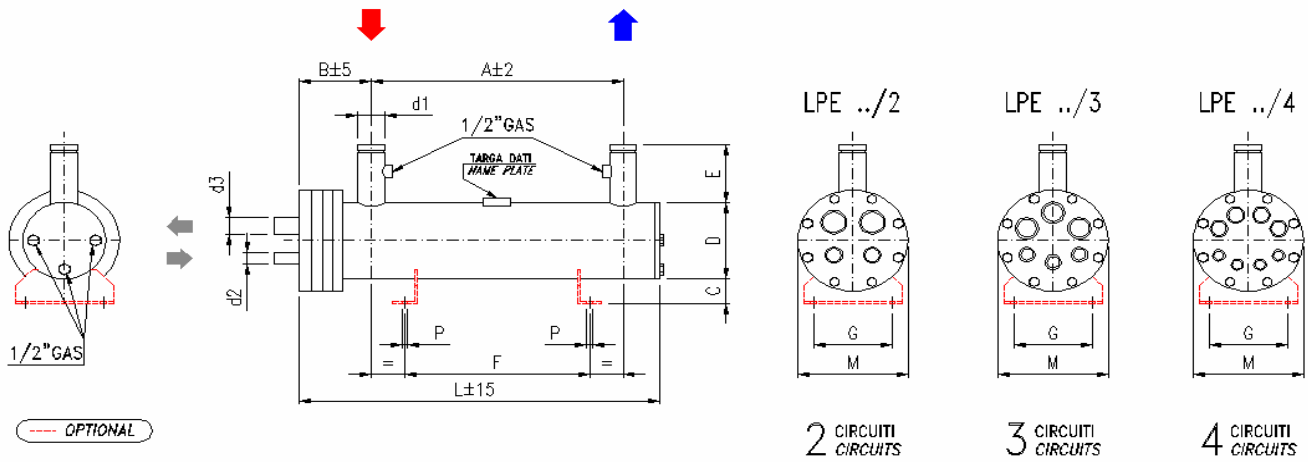
PESO / WEIGHT	kg	593	610	740	800	910	1050	1110
---------------	----	-----	-----	-----	-----	-----	------	------

DATI NOMINALI NOMINAL DATA	R 134a	Temperatura entrata acqua / Inlet water temperature	+12°C	Temperatura di evaporazione / Evaporation temperature	+3°C
		Temperatura uscita acqua / Outlet water temperature	+7°C	Temperatura di condensazione / Condensation temperature	+40°C
		Fattore di sporcamento / Fouling factor	m ² /KW	0,000043	Surriscaldamento / Superheating



Shell and tube evaporators

LPE



MODELLO / MODEL	LPE	950	1150
Potenza totale	kW	950	1132
Total capacity	Tons (RT)	270,1	321,9
Portata / Flow rate	m ³ /h	163,1	194,3
Perdite di carico / Pressure drop	kPa	46	53
Volume gas	L	271	328
Volume H ₂ O		570	540

⚠ Potenza totale = somma di tutti i circuiti / Total capacity = sum total of all circuits

DIMENSIONI DIMENSIONS (mm)	A	2800	2780
	B	307	320
	C	97	120
	D	558	610
	E	200	250
	F	2400	2400
	G	400	500
	L	3343	3380
	M	670	720
P	18	18	

ATTACCHI / CONNECTIONS	ACQUA / WATER		d1 - PN 10	DN 200	DN 200
	1 Circuito	LPE../1	d2	-	-
	1 Circuit		d3	-	-
	2 Circuiti	LPE../2	d2	ODS (FL) 54	ODS (FL) 64
	2 Circuits		d3	OD (FL) 141	OD (FL) 168
	3 Circuiti	LPE../3	d2	ODS (FL) 42	ODS (FL) 54
	3 Circuits		d3	OD (FL) 114	OD (FL) 141
	4 Circuiti	LPE../4	d2	ODS (FL) 35	ODS (FL) 42
4 Circuits	d3		OD (FL) 89	OD (FL) 114	

PESO / WEIGHT	kg	1430	1690
---------------	----	------	------

DATI NOMINALI NOMINAL DATA	R 134a	Temperatura entrata acqua / Inlet water temperature	+12°C	Temperatura di evaporazione / Evaporation temperature	+3°C
		Temperatura uscita acqua / Outlet water temperature	+7°C	Temperatura di condensazione / Condensation temperature	+40°C
		Fattore di sporco / Fouling factor	m ² /KW	0,000043	Surriscaldamento / Superheating

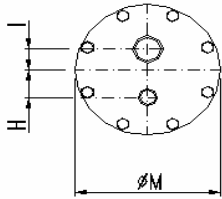


Interasse attacchi refrigerante

Refrigerant inlet / outlet distance

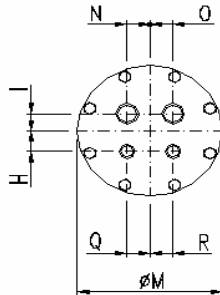
LPE../1

1 CIRCUITO - CIRCUIT



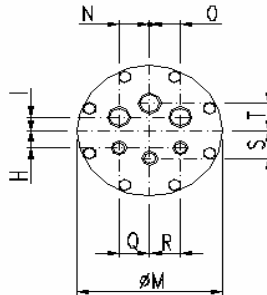
LPE../2

2 CIRCUITI - CIRCUITS



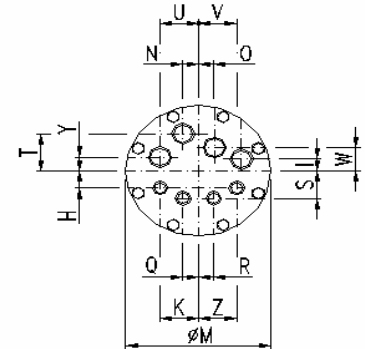
LPE../3

3 CIRCUITI - CIRCUITS



LPE../4

4 CIRCUITI - CIRCUITS

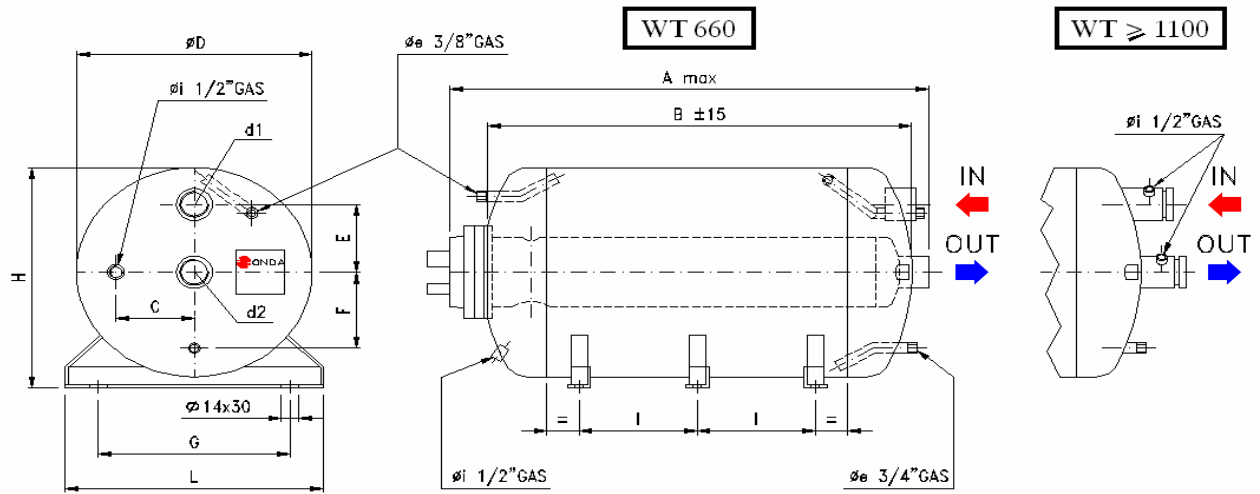


TESTATA / HEADER	ØM mm	270	340	420	520	570	620	670	720
LPE ../1	H	57	60	90	115	-	-	-	-
	I	44	55	70	100	-	-	-	-
LPE ../2	H	52	57	75	100	70	90	110	130
	I	30	45	65	80	90	110	110	130
	N	46	54	67	90	100	120	120	120
	O	46	54	67	90	100	120	120	120
	Q	36	54	67	90	100	120	120	120
R	36	54	67	90	100	120	120	120	
LPE ../3	H	40	65	60	80	80	90	100	100
	I	35	39	39	55	80	90	100	100
	N	60	71	101	125	135	150	155	175
	O	60	71	101	125	135	150	155	175
	Q	60	80	101	125	135	150	155	175
	R	60	80	95	125	135	150	155	175
	S	60	100	100	130	130	160	190	190
T	70	105	110	130	140	160	190	210	
LPE ../4	H	-	45	45	70	70	80	80	100
	I	-	32	45	60	65	60	70	80
	N	-	39	40	52	57	62	70	73
	O	-	31	40	52	57	62	70	73
	Q	-	32	40	52	52	62	70	73
	R	-	32	40	52	52	62	70	73
	S	-	75	90	115	120	175	175	190
	T	-	98	110	140	160	175	195	205
	U	-	99	110	135	155	173	180	200
	V	-	101	110	135	155	173	180	200
	K	-	90	110	135	155	173	180	200
	Y	-	37	45	60	65	60	70	80
	W	-	65	110	140	160	175	195	205
Z	-	90	110	135	155	173	180	200	

Accumulatori d'acqua per evaporatori

Water accumulators for evaporators

WT



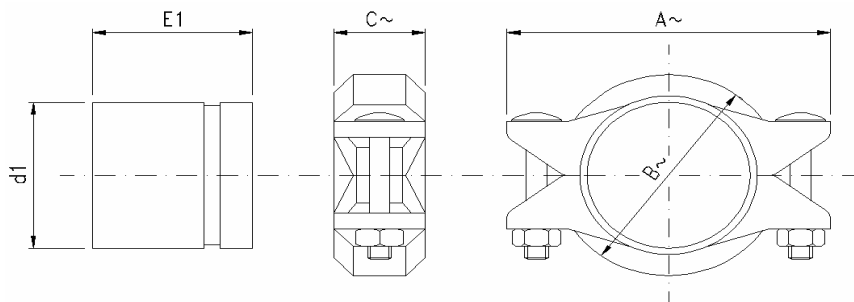
MODELLO / MODEL	WT 660	WT 1100	WT 1250	WT 1500	WT 2000
N° Staffe / Supports no.	3	3	4	4	4
Volume H ₂ O [L]	658	1184	1354	1455	1910
A _{max}	2630	2790	3135	3340	3200
B	2485	2520	2870	3070	2855
C	155	200	200	200	220
ØD	600	800	800	800	950
E	200	270	270	270	290
F	240	330	330	330	380
G	480	650	650	650	780
H	620	820	820	820	970
I	1005	1005	780	850	760
L	630	830	830	830	980
M	135	180	180	180	250
N	155	200	200	200	230
d ₁	Ø 3"	DN 125	DN 125	DN 125	DN 150
d ₂	Ø 3"	DN 125	DN 125	DN 125	DN 150
Peso / Weight [kg]	140	250	270	295	335
Modelli LPE inseribili Insertable LPE Models	85	120	120	120	170
	120	170	170	170	205
	170	205	205	205	230
	205	230	230	230	280
	230	280	280	280	320
		320	320	320	360
		360	360	460	
		460	460	490	
			490	580	
			540	730	

Accumulatori d'acqua / Water Accumulators

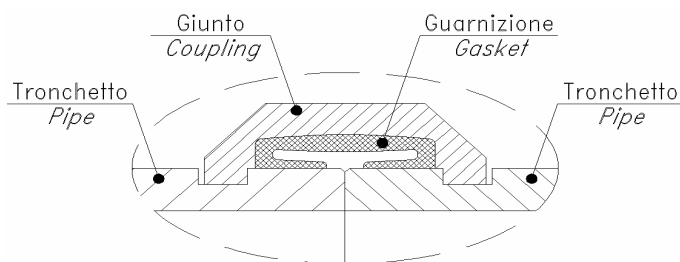
	Temperatura di progetto Design Temperature Min / Max [°C]	Pressione di progetto Design Pressure [bar]
Standard ONDA	- 10 / + 90	6
CE	- 10 / + 90	6
GOST	- 10 / + 90	6

GIUNTI FLESSIBILI / FLEXIBLE COUPLINGS

Solo per temperatura superiore a -18°C / Only for temperature higher than -18°C



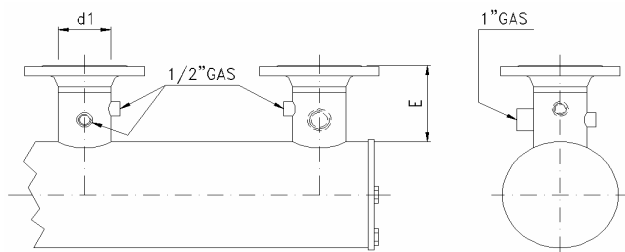
d1	A~ (mm)	B~ (mm)	C~ (mm)	E1~ (mm)
DN 80	165	115	50	80
DN 100	200	145	50	100
DN 125	245	175	50	100
DN 150	275	205	55	150
DN 200	345	265	60	150



ISOLAMENTO / INSULATION

SPESSORE / THICKNESS	
8mm	16mm
5/16"	5/8"

DISPONIBILE SU RICHIESTA / ON REQUEST AVAILABLE



d1	E (mm)
DN 80 / PN 16	140
DN 100 / PN 16	152
DN 125 / PN 16	155
DN 150 / PN 16	195
DN 200 / PN 10	197